



RC2-710A Screw Compressor-R134a

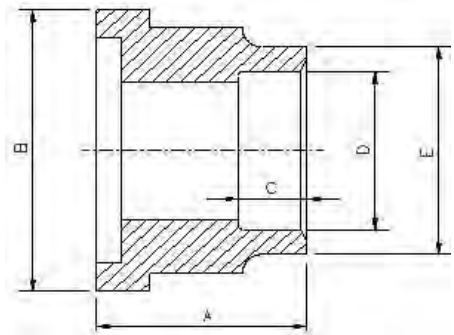
| Specifications | | Displacement | CFM | 60 Hz | 505 |
|---------------------------|----------------------|--------------------------------------|---|-------|-----|
| Compressor | Rated Speed | Rpm | 60 Hz | 3550 | |
| | Volume Ratio | Vi | 2.6 (standard other Vi available) | | |
| | Nominal Hp | 158 Hp at 60 Hz | | | |
| | Capacity Control | % | 35%,50%,75% & 100% Step Capacity Control, 50%~100% Continuous Stepless Capacity Controls | | |
| | Lubrication | Differential Pressure Feed Lubricant | | | |
| | Motor | Type | 3 Phase, 2 Pole, Squirrel Cage, Induction Motor | | |
| Insulation | | Class F | | | |
| Protection | | 3 PTC Protection 1 per winding | | | |
| Lubricant Charge | Gallons | 7.4 | | | |
| Oil Heater | Watts | 300 | | | |
| Hydrostatic Pressure test | lb/in ² G | 597 | | | |
| Weight | Pounds | 2423 | | | |

Standard Compressors Accessories

- Modulating Slide Capacity
- Weather Proof Terminal Box for outdoor applications
- 115/1/60 Control Voltage
- 115/1/60 Crankcase heater
- Horizontal Discharge Check Valve
- Discharge Service Valve (Discharge Stop Valve) with standard connection sizes and supplied with flanges and bushings
- Suction Service Valve (Suction Stop Valves) with standard connection sizes and supplied with flanges and bushings
- Oil Level Float Switch
- Suction Filter
- Oil Filter
- PSI Relief Valve
- Oil Sight Glass
- PT1000 for Reading Motor Temp
- INT69HBY supporting motor and discharge (PTC) temperature sensor protection as well as Phase Loss and Phase Reversal at Start Up Only

Ports

- External Oil Cooler
- Liquid Injection (into screw chamber)
- Economizer
- Suction, Discharge & Oil Service



Connections

| | | | | | | |
|----------------------------------|---------------------------|-------|-------|-------|-------|-------|
| Discharge Stop Valve | 4" | | | | | |
| Horizontal Discharge Check Valve | 4" | | | | | |
| Suction Stop Valve | 5" | | | | | |
| Economizer | 1 1/8" solder | | | | | |
| Liquid Injection (chamber) | 5/8" flare | A | B | C | D | |
| Discharge Side | Copper Pipe Sizing 4 1/8" | 2.99" | 5.71" | 1.97" | 4.14" | 4.56" |
| Suction Side | Copper Pipe Sizing 5 1/8" | 2.95" | 6.85" | 1.38" | 5.14" | 5.77" |

MCC & LRA

Optimized for R134a

| Hertz | Volts | Maximum Continuous Current | Y-Δ | |
|-------|-------|----------------------------|-----------------------|-----------------------|
| | | | Locked Rotor Amps (Y) | Locked Rotor Amps (D) |
| 60 | 460 | 363 | 467 | 1400 |